

HammerStone

Manufactured stone veneers for commercial & residential applications

Veneer Stone Specification Guide

Section 04711: Manufactured Stone Veneer

Use this specification guide for each individual project, omitting portions not applicable as required.

1.1 PRODUCT NAME

Manufactured stone veneer for exterior and interior wall covering by HammerStone.

Style _____ Color _____

1.2 MANUFACTURER

HammerStone, Inc.
9017 Jefferson Davis Highway
Fredericksburg, VA 22407

800 246-1543

1.3 DESCRIPTION OF WORK

Furnish and install HammerStone Veneer as specified on drawings and specified installation procedures.

1.4 SUBMITTALS

As required.

1.5 MATERIAL COMPOSITION

Stone veneer to be produced by Type I Portland cement, lightweight aggregates, and iron oxide color to meet or exceed the following specifications:

Water absorption: 3.3%
Compressive strength: 3,300 psi. +
Thermal conductivity: 1.38 R-Factor

1.6 PRODUCT PACKAGING AND HANDLING

HammerStone is packaged on 40"x48" pallets (non-stackable) with up to 200 square feet of flat pieces per pallet or 100 lineal feet of corner pieces per pallet. Weight is approximately 10 pounds per square foot (2,000 per pallet) depending on style.

2.1 INSTALLATION MATERIALS

All materials and equipment are to be clean and free of chemicals that may cause efflorescence. Materials shall conform to:

a. Mortar & Grout:

Portland cement: ASTM C150, type 1 or 2.
Masonry sand: ASTM C144
Type S Mortar: ASTM C270 standards.
Mortar and/or grout colors: ASTM C979, mineral oxide pigments.

Phone: (800) 246-1543
Fax: (540) 898-4286

9017 Jefferson Davis Highway
Fredericksburg, VA 22407

HammerStone and Original Rock Replicas of VA are trade names of HammerStone, Inc.

HammerStone Specification Guide (continued)

Water: use clean potable water.

Wire mesh (as specified): 2.5# Galvanized.

Fasteners: 1.5" galvanized nails, staples or screws.

Vapor/moisture barrier: ASTM D226, 15 lb. asphalt saturated organic felt.

2.2 BONDING & GROUTING MORTARS

Combine 3 parts sand to 1 part Type S mortar thoroughly and evenly.

3.0 EXECUTION

3.1 EXAMINATION

Site verification: Verify that substrate conditions are acceptable for product installation in accordance with manufacturer's instructions.

3.2 PREPARATION

Surface preparation as follows:

- a. **Open stud:** Install paper backed metal lath to studs using galvanized nails or staples, 4" on center, which penetrate a minimum of 1". Wrap vapor barrier and lath 16" around outside and inside corners.
- b. **Sheathed surfaces:** Install vapor barrier with 4" overlapping joints. Apply metal lath with 2" overlapping joints using galvanized nails, staples or screws that penetrate a minimum of 1". Apply 6" on center vertically and 16" on centers horizontally. Wrap vapor barrier and lath 16" around outside and inside corners.
- c. **New concrete and masonry surfaces:** No preparation needed if surface is clean and contains no release agents or acid residues.
- d. **Existing concrete & masonry surfaces:** either –

1. Remove paint, coatings, sealers and dirt using high pressure water or sandblasting, OR –
2. Apply metal lath to surfaces as described in 3.2b above.

3.3 INSTALLATION OF MANUFACTURED STONE VENEER

Note: Protect all applications from freezing.

- a. Apply 3/8" parge coat of mortar to substrate. Allow to set until firm.
- b. Spread 3/8" mortar coat over entire back of stone.
- c. Press and set stone in place using a back and forth motion to ensure 100% coverage on back.
- d. Set stones so joints are approximately 3/8" to no more than 3/4" thick
- e. Apply in desired pattern.

3.4 GROUTING

- a. Do not begin grouting until stones are firmly set.
- b. Force the maximum amount of grout into joints using a grout bag to fill all gaps.
- c. Remove surplus grout from joints by raking and tooling as desired.
- d. Remove droppings and mortar from the face of stones within 2 hours of placing.

3.5 CLEANING

- a. Use water and a stiff bristle brush to clean faces of stone, as necessary.
- b. Do not use acid or acid-based products.
- c. Do not use salt or de-icing chemicals on or adjacent to HammerStone application.

HammerStone Specification Guide (continued)

Additional HammerStone product information:

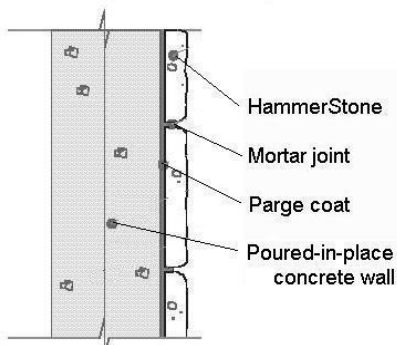
Average size attributes of selected stone styles:

Style	Average Relief	Average Size	Average Weight
Castlerock	1"	7"x7"	8 lbs/sq ft
Cobblestone	1.5"	6"x6"	10
Creekbed	2"	5"x5"	10
Fieldstone	2.5"	10"x10"	13
Ledgerrock	3"	3"x8"	15

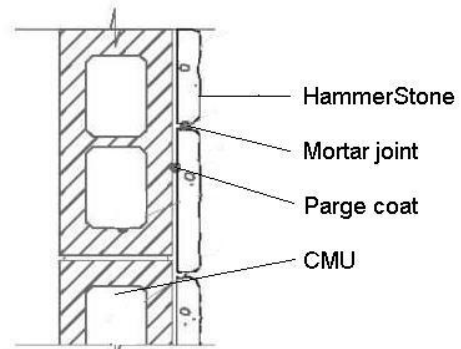
HammerStone weighs between 8 and 13 lbs per square foot, depending on style.

The following drawings may be used to aid in the specifying and installation processes:

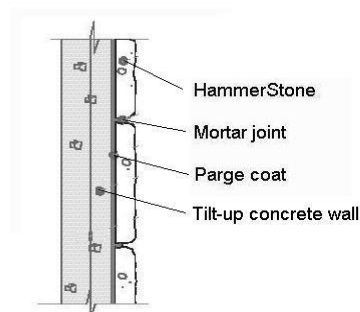
Concrete & Masonry Surfaces:



○ INSTALLATION ON CONCRETE WALL
SCALE AS NOTED



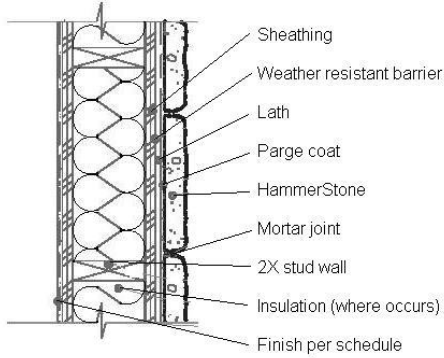
○ INSTALLATION ON CMU WALL
SCALE AS NOTED



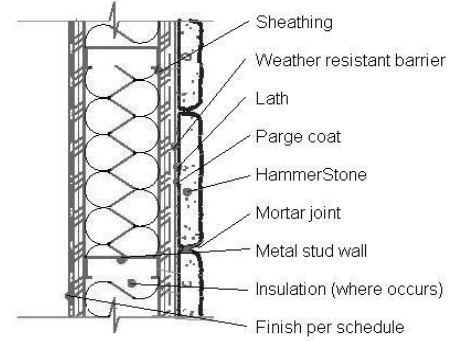
○ INSTALLATION ON TILT-UP WALL
SCALE AS NOTED

HammerStone Specification Guide (continued)

Wood Framing



Metal Framing

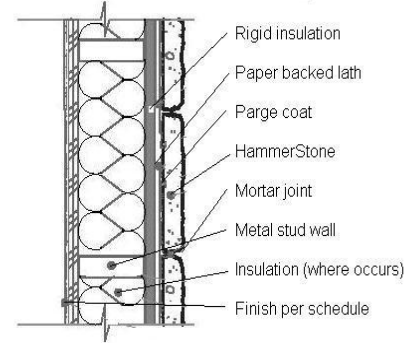
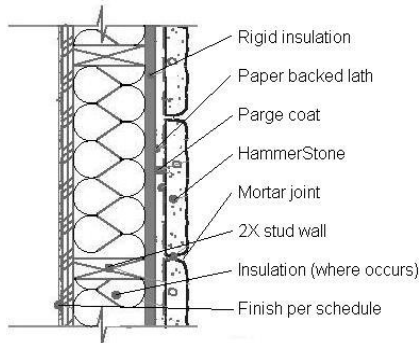


INSTALLATION OVER SHEATHING

SCALE AS NOTED

INSTALLATION OVER SHEATHING

SCALE AS NOTED



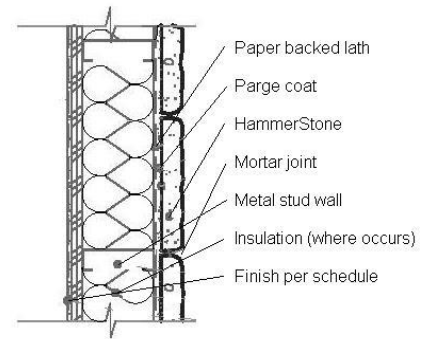
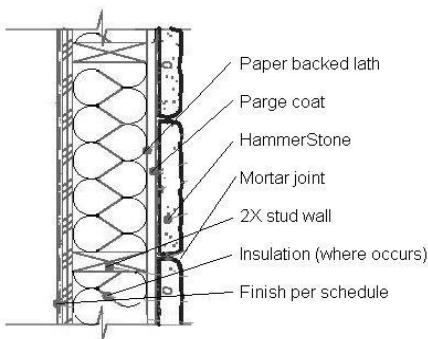
Scale 1.5"=1'

INSTALLATION OVER RIGID INSULATION

SCALE AS NOTED

INSTALLATION OVER RIGID INSULATION

SCALE AS NOTED



INSTALLATION OVER OPEN STUD FRAMING

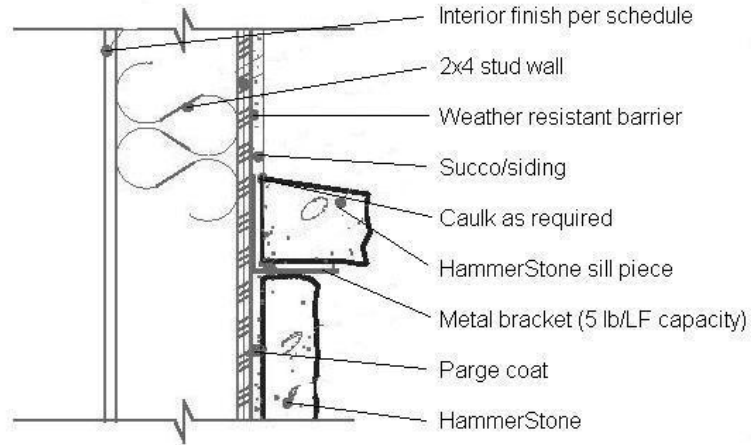
SCALE AS NOTED

INSTALLATION OVER OPEN STUD FRAMING

SCALE AS NOTED

HammerStone Specification Guide (continued)

Water Table / Sill Piece Installation



WATERTABLE @ WAINSCOT

SCALE AS NOTED